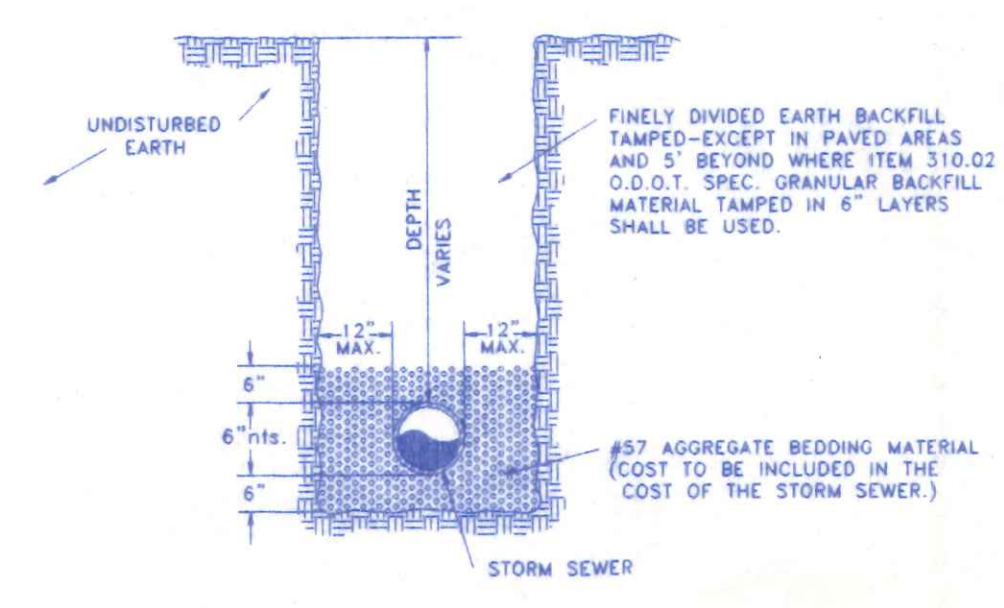
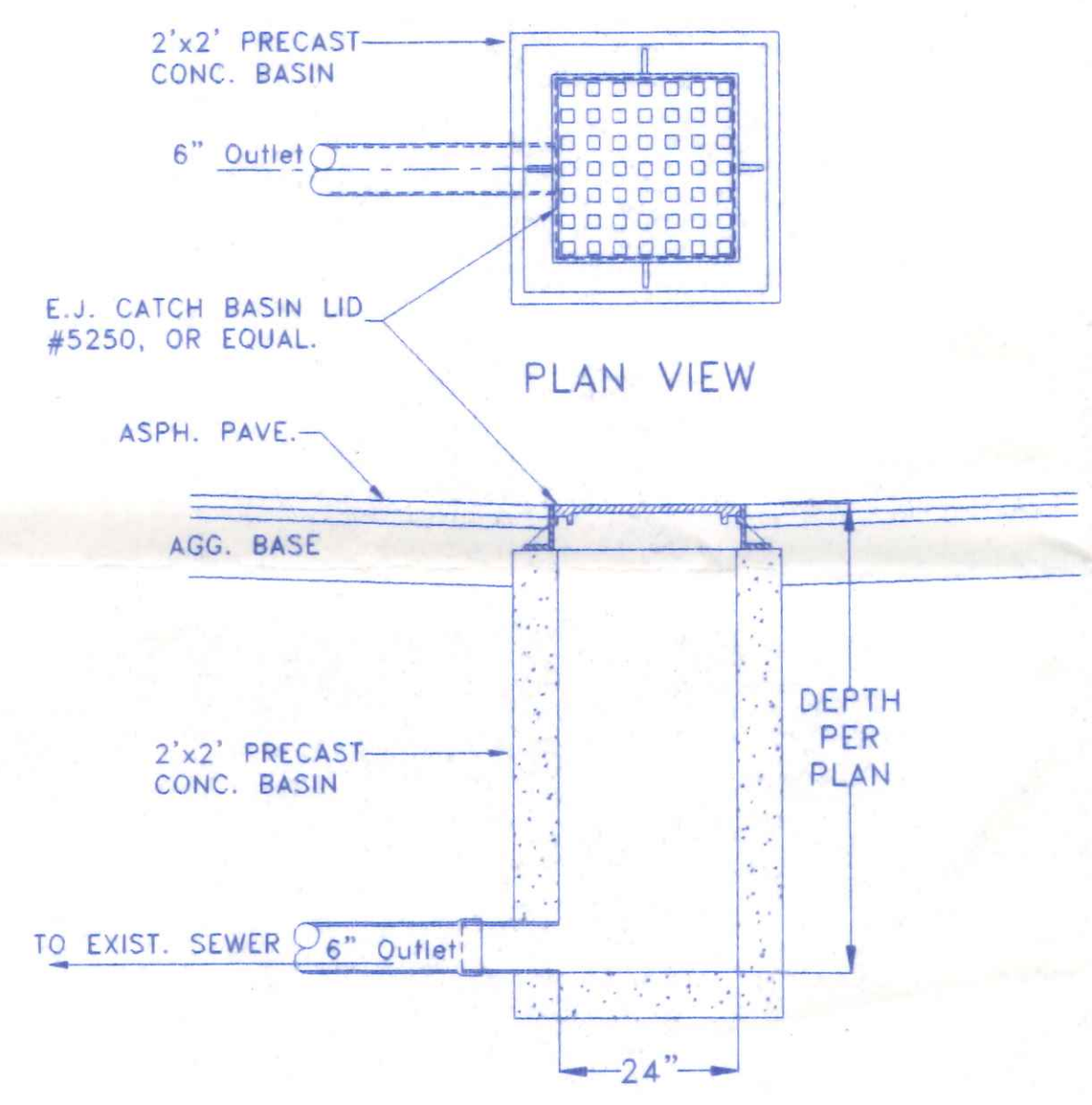


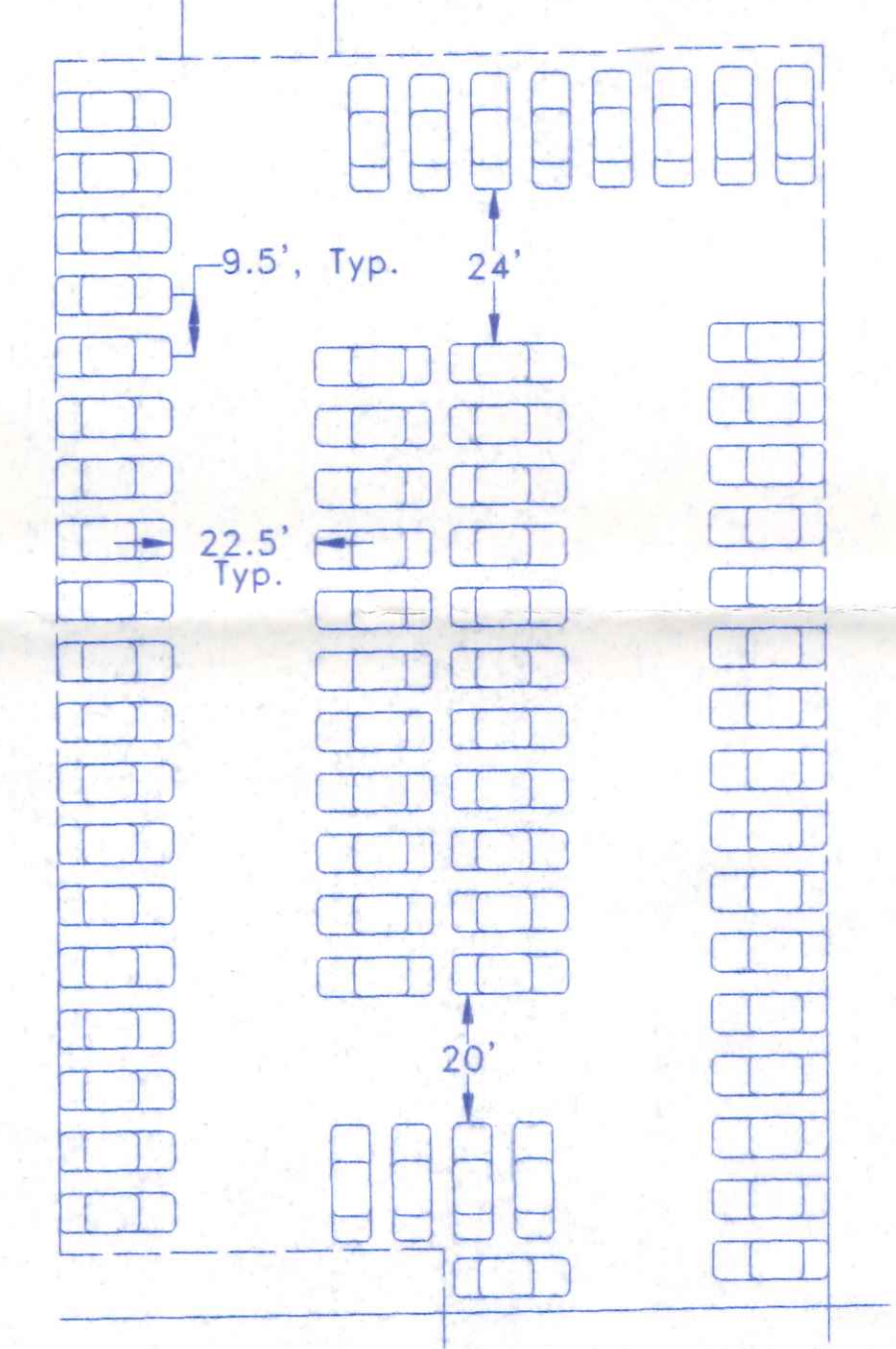
DRIVE APPROACH ELEVATION DETAIL
NO SCALE



STORM SEWER TRENCH DETAIL
NO SCALE

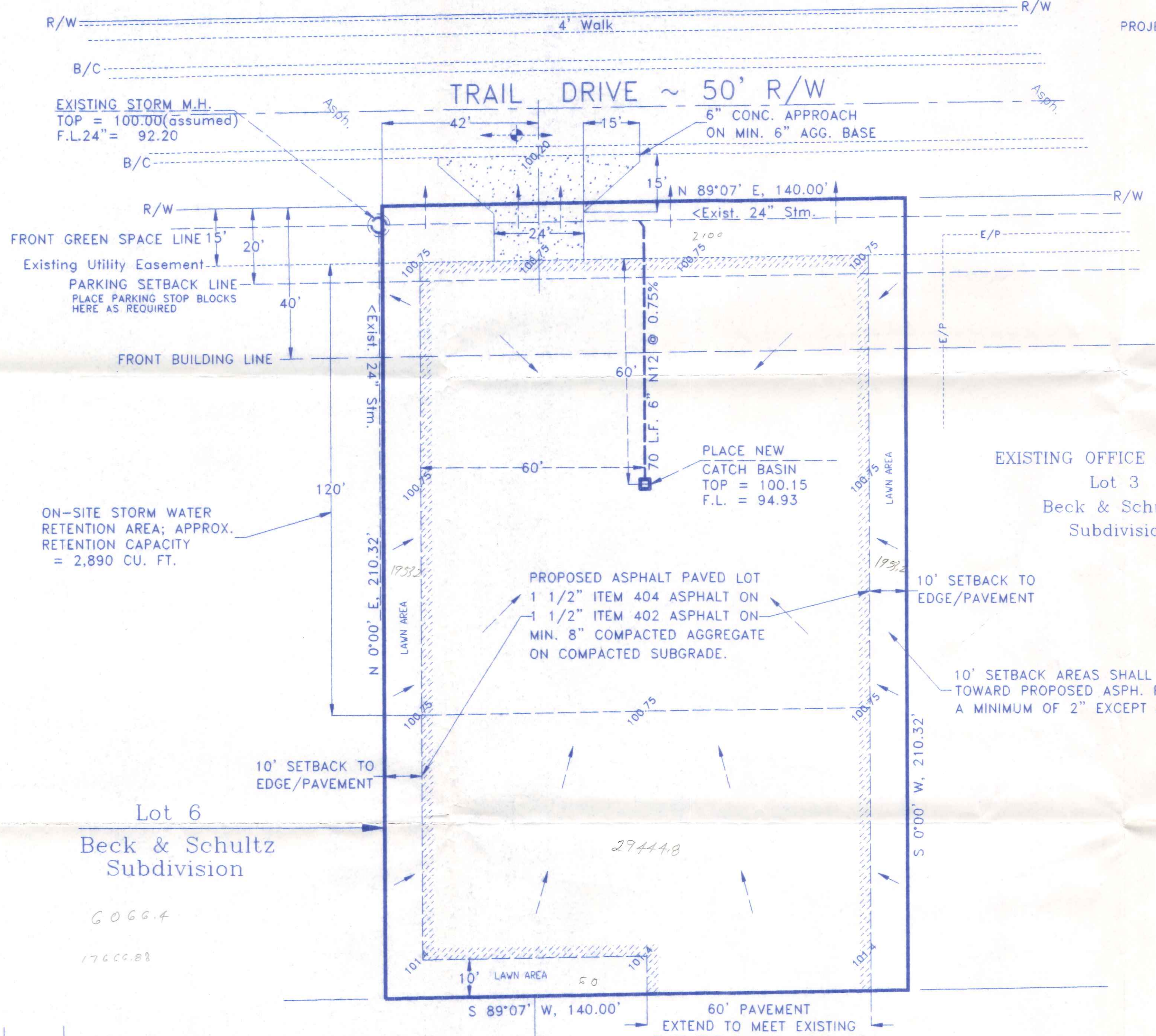


CATCH BASIN DETAIL
1/2" = 1'-0"



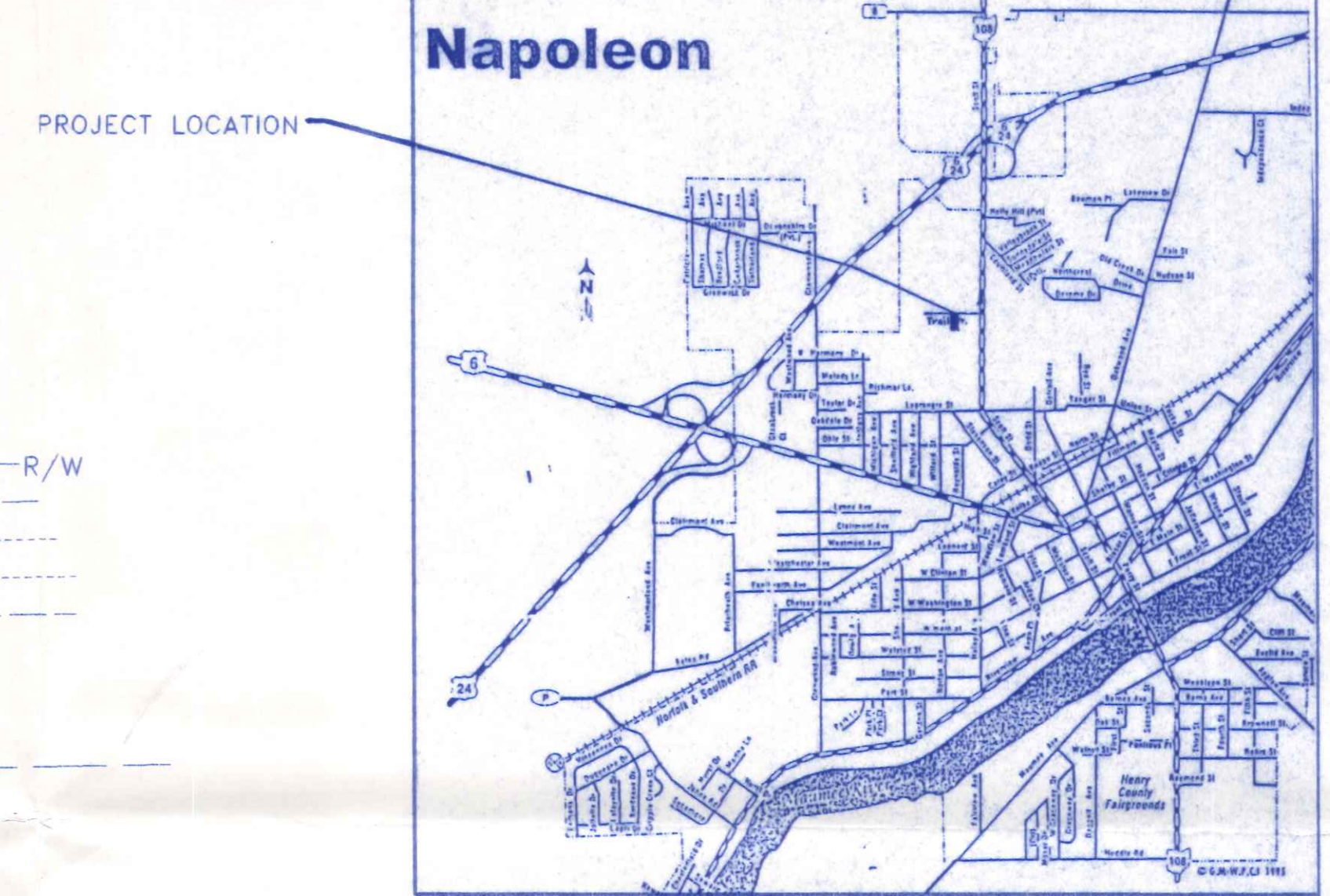
CONCEPT AUTO DISPLAY PLAN
1" = 30'

NOTE: THIS PLAN IS INTENDED ONLY TO ILLUSTRATE ONE OPTION FOR PARKING LAYOUT (APPROX. 70 AUTOS). OPTIONAL PLANS FOR DISPLAY ARE ALLOWABLE.



ON-SITE STORM WATER RETENTION AREA; APPROX. RETENTION CAPACITY = 2,890 CU. FT.

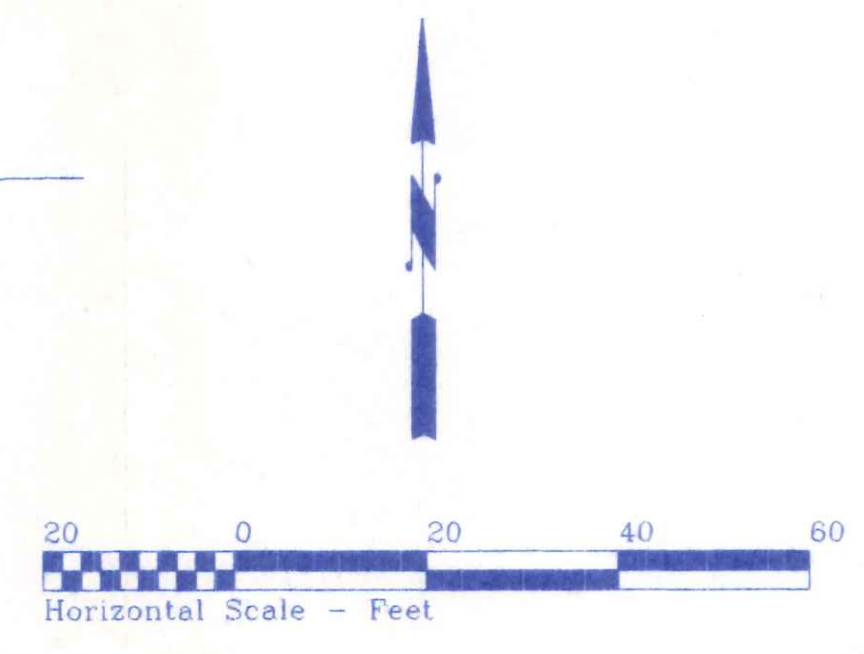
60' PAVEMENT EXTEND TO MEET EXISTING PAVEMENT ON ADJACENT LOT



LOCATION MAP



OHIO UTILITIES PROTECTION SERVICE
The underground utilities shown hereon are only approximate. Some of the utilities were located by field observation, where possible, and the remaining utilities were derived from various records. Exact locations must be determined by the UTILITY COMPANIES. For exact locations, telephone the Ohio Utilities Protection Service (O.U.P.S.) toll free at 1-800-362-2764. (Telephone 2 working days before any digging.)



631 Trail Drive

Lot 6 Beck & Schultz Sub.

7-20-98
APPROVED
BND

Plan #
98/07/20

RECEIVED
JUL 20 1998
CITY OF NAPOLEON

NOTE: PROPOSED GRADE ELEVATIONS SHOWN HEREON ARE PRELIMINARY, PENDING A FINAL SITE SURVEY. FINAL GRADES SHALL CONFORM TO THE BASIC PLAN SHOWN. PIPE GRADES AND RETENTION AREA AND VOLUME SHALL NOT BE ALTERED.

PATTON AUTO SALES LOT		
1421 SCOTT STREET	419/599-1421	NAPOLEON, OHIO
DIRECTORY: C:\NO\BECK\COMMERCIAL	FILE NAME: PATTON\SITEPLAN	REVISED:
DRAWN BY: R.D.S. ~ dbo: NEW DIMENSIONS		SCALE: 1" = 20' / noted
SITE PLAN FOR AUTO SALES LOT		DATE: JULY, 1998
TRAIL DRIVE, NAPOLEON, OHIO		DRAWING NUMBER: 1 of 1